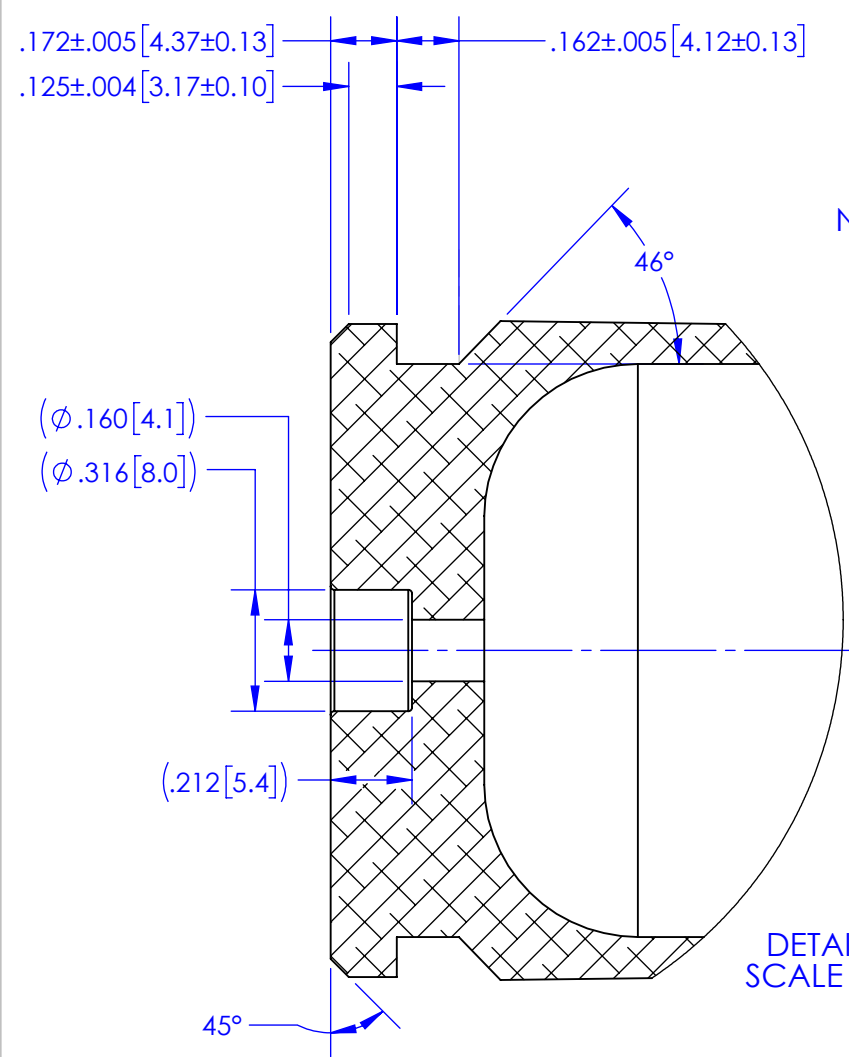
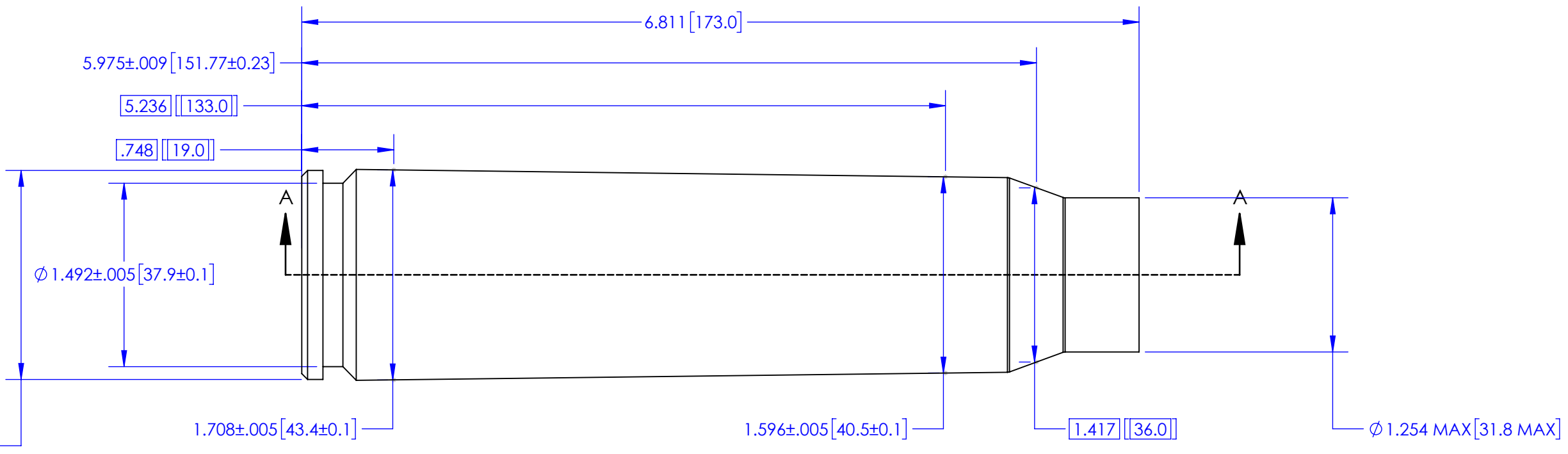
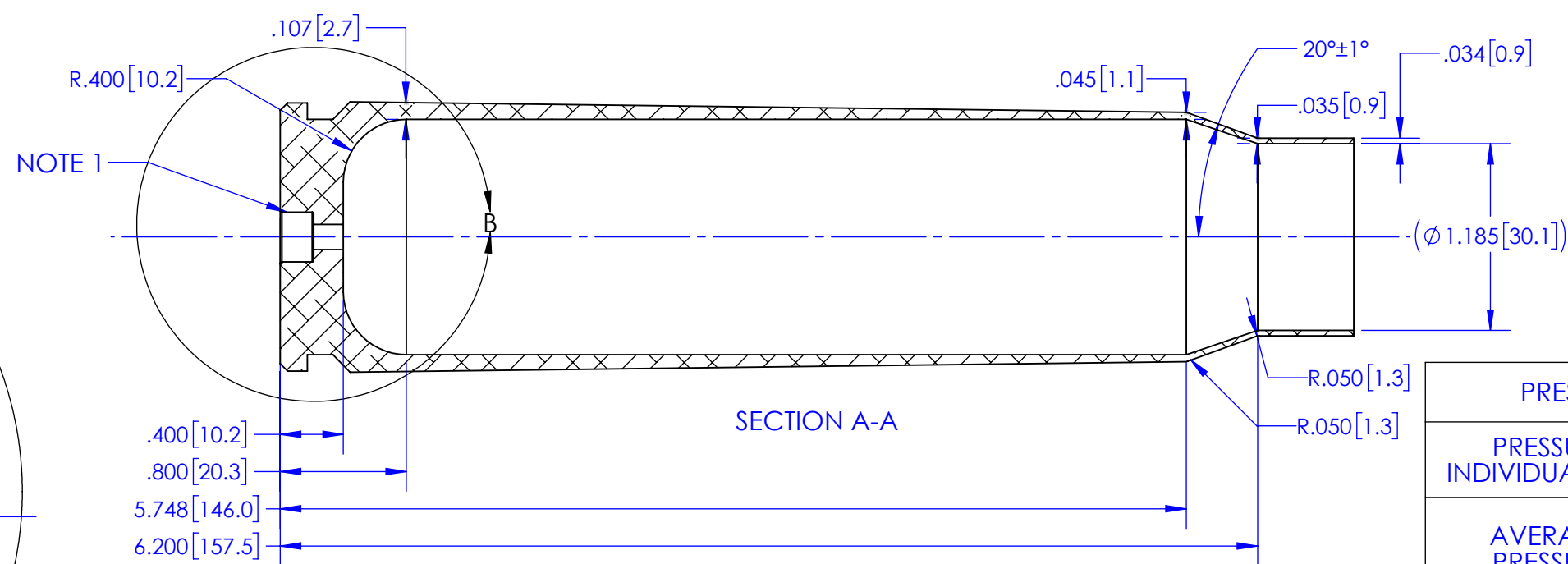


Ø 1.700±.006 [43.19±0.15]



DETAIL B
SCALE 2 : 1



NOTE 1: SHELLS ARE TYPICALLY PRIMED WITH ELECTRONIC PRIMERS, THIS SHELL WAS MODELS WITH A CCI 35 50 BMG PRIMER.
 NOTE 2: INNER GEOMETRY WAS ESTIMATED BASED ON A REPORTED CASE VOLUME OF 173.30CC AND FOLLOWS TYPICAL SHELL GEOMETRY

DRAWING SOURCE MATERIAL - NATO STANAG : 4624 : 2012

PRESSURE SPECIFICATION	
PRESSURE INDIVIDUAL MAX	76,579 PSI (5279 BAR)
AVERAGE PRESSURE	52,214 PSI (3600 BAR)

ALL ATTEMPTS HAVE BEEN MADE TO PRESENT AN ACCURATE DRAWING BASED ON THE SOURCE MATERIAL. USE SOURCE MATERIAL TO PROOF THIS DRAWING PRIOR TO USE. READ THE TECHNICAL NOTES ON THIS DRAWING PRIOR TO USE.
 IF ERRORS IN THIS DRAWING ARE DISCOVERED EMAIL JAY@THEBALLISTICASSISTANT

MATERIAL
ALUMINUM

DO NOT SCALE DRAWING

IF YOU LIKE WHAT YOU SEE HELP SUPPORT US DONATE VIA PAYPAL

TITLE: 30MM X 173 SHELL		
SIZE B	REV N/A	
SCALE: 1:1	WEIGHT:	SHEET 1 OF 1