

THIS AR-15 RECEIVER BUILD IS BASED ON THE PLANS ORIGINALLY DEVELOPED BY ELMGROVE1765@YAHOO.COM.

ALL CREDIT GOES TO THE ORIGINAL AUTHOR.

MINOR EDITS WERE MADE WHERE DIMENSIONS WERE MISSING.

BEFORE BUILDING THROUGHALLY REVIEW THE PLANS, THE SOURCE MATERIAL, AND ALL LOCAL, STATE AND FEDERAL LAWS.

IT SHOULD BE NOTED THAT 80% RECEIVERS ARE WIDELY AVAILBLE AND REQUIRE FAR LESS WORK TO BUILD.

| | | | |
|---|---------------------------------|---|----------------------------------|
| <small>ALL ATTEMPTS HAVE BEEN MADE TO PRESENT AN ACCURATE DRAWING BASED ON THE SOURCE MATERIAL. USE SOURCE MATERIAL TO PROOF THIS DRAWING PRIOR TO USE. READ THE TECHNICAL NOTES ON THIS DRAWING PRIOR TO USE.</small> <small>IF ERRORS IN THIS DRAWING ARE DISCOVERED EMAIL JAYANDREW338@GMAIL.COM.</small> | TITLE: | | |
| | AR -15 Receiver | | |
| <small>MATERIAL</small> 6061 or 7075 Reccomended | <small>SIZE</small> B | <small>FIREARM MODEL</small> AR - 15 | <small>REV</small> N/A |
| <small>DO NOT SCALE DRAWING</small> | <small>SCALE: 1:1</small> | <small>WEIGHT:</small> | <small>SHEET 1 OF 14</small> |
| <small>IF YOU LIKE WHAT YOU SEE HELP SUPPORT US DONATE VIA PAYPAL</small> | | | |

Drill Sizes Required:

#43 or 0.0890"
#36 or 0.1065"
7/64 or 0.1094"
#29 or 0.1360"
5/32 or 0.1563"
13/64 or 0.2031"
#3 or 0.2130"

Taps Required

4-40 (Optional)
6-32 (Optional)
1/4-28
1 3/16-16

Hand Reamer Required

3/16 (0.156)

Suggested End Mill Sizes

1/8 (.1250)
1/4 (.2500)
5/16 (.3125)

Suggest Material for All Parts

6061 Aluminum
-or-
7075 Aluminum
-or-
1018 Steel

Notes by Elmgrove1765@yahoo.com

Note 1: If you use 1/8" (0.125) stock for the side plates, note that the actual thickness of the plate may vary by as much as .005". Actual dimensions are not critical as long as the flats machined at the ends of the fire control well sideplates have a thickness of 0.104".

Note 2: The only holes that need to be reamed are the trigger and firing pins holes. These holes may be reamed with a 0.15625" (5/32) reamer which is a standard size.

Note 3: The "Colt Redraw Prints" by D. Snider, show the magazine release button with a hole width of 0.318". After measuring several magazine release buttons the max size found was 0.300". A standard size 5/16 (0.3125") end mill was used.

Notes by Jay Andrew

Note 1: This receiver does not have accommodation for safety detents, take down pin detents, or a bolt hold open mechanism.

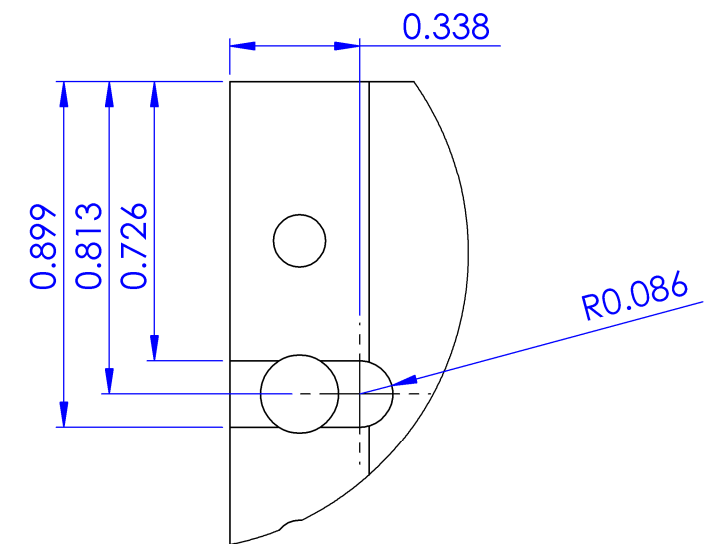
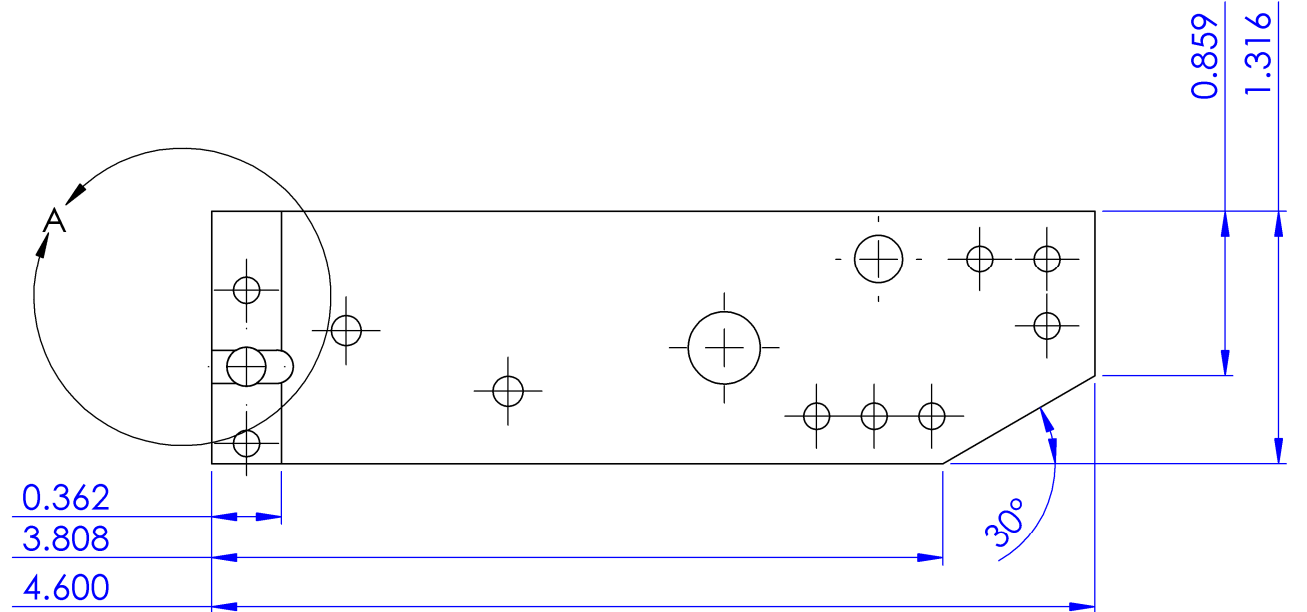
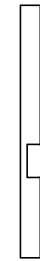
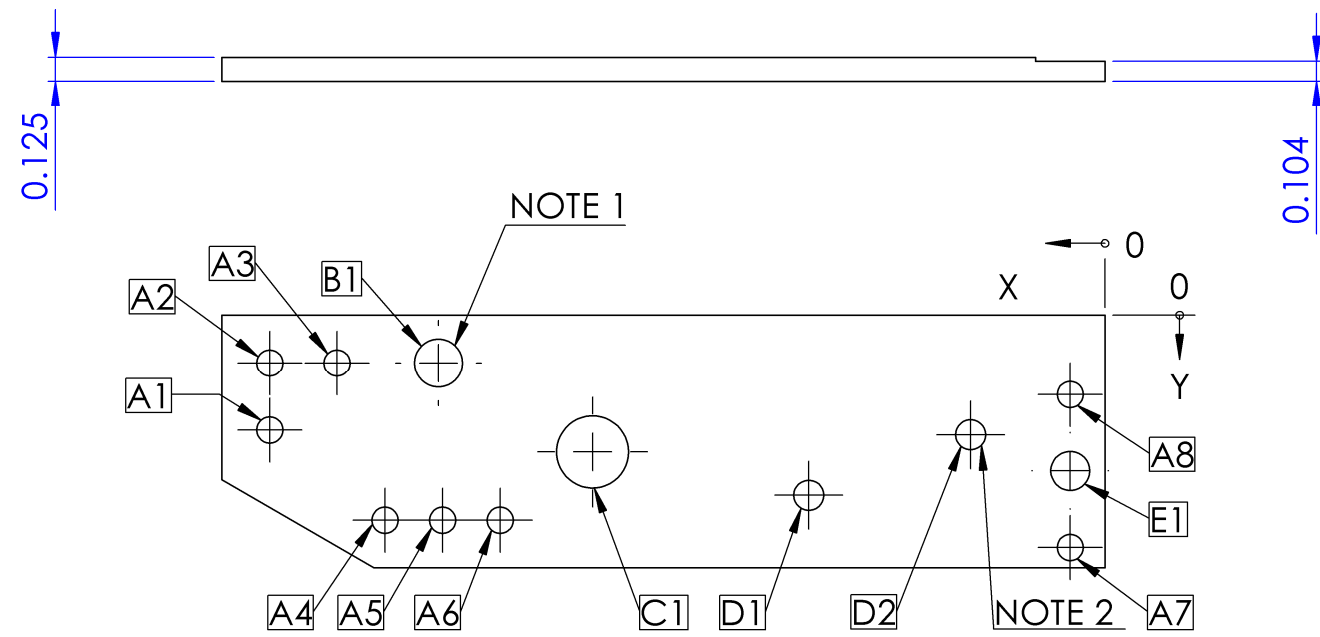
Note 2: Print drawings on 11x17 (Ledger) size paper. Drawings scaled at 1:1 may be cut out and used as templates for hole and edge marking.

Note 3: Receiver plates are held together with 6-32 and 4-40 screws. Options may exist to use rivets or a combination of fasteners and adhesive therefore they are considered optional

Note 4: Typical materials appropriated for construction are 6061 Aluminum, 7075 Aluminum, 1018 Steel. Parts may be made from one, or all of the suggested materials, and any combination thereof. There may be other suitable alloys or materials.

Note 5: Have an Anderson Lower Receiver Parts Kit and a couple different brands and styles of magazines to check fit.

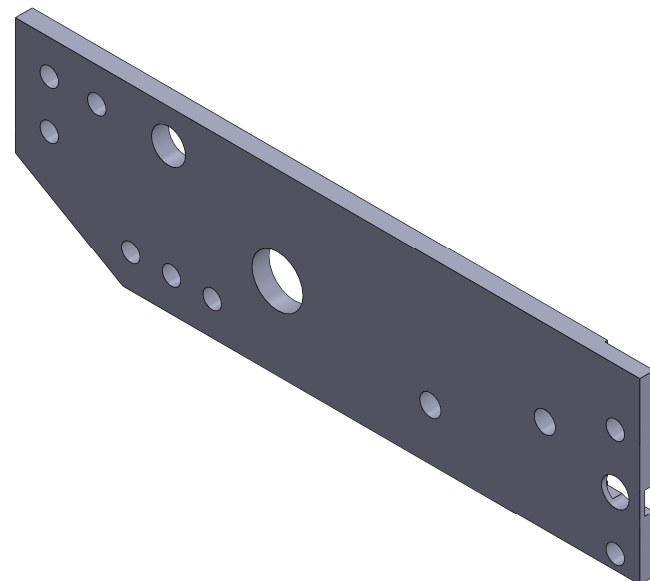
| | | | |
|--|--|---|----------------------------------|
| <small>ALL ATTEMPTS HAVE BEEN MADE TO PRESENT AN ACCURATE DRAWING BASED ON THE SOURCE MATERIAL. USE SOURCE MATERIAL TO PROOF THIS DRAWING PRIOR TO USE. READ THE TECHNICAL NOTES ON THIS DRAWING PRIOR TO USE.</small> | | <small>TITLE:</small> <h1>Build Notes</h1> | |
| <small>IF ERRORS IN THIS DRAWING ARE DISCOVERED EMAIL JAYANDREW338@GMAIL.COM. MATERIAL</small> | | <small>SIZE</small> <h2>B</h2> | <small>FIREARM MODEL</small> |
| <small>DO NOT SCALE DRAWING</small> | | <small>SCALE: 1:1</small> | <small>WEIGHT:</small> |
| <small>IF YOU LIKE WHAT YOU SEE HELP SUPPORT US DONATE VIA PAYPAL</small> | | | <small>SHEET 2 OF 14</small> |



DETAIL A
SCALE 2 : 1

NOTE 1: HAND REAM HOLE B1 TO FINAL DIAMETER
NOTE 2: HAND REAM HOLE D1 AND D2 TO FINAL DIAMETER

| TAG | X LOC | Y LOC | SIZE |
|-----|-------|-------|-------------|
| A1 | 4.350 | 0.600 | Ø0.136 THRU |
| A2 | 4.350 | 0.250 | Ø0.136 THRU |
| A3 | 4.000 | 0.250 | Ø0.136 THRU |
| A4 | 3.750 | 1.069 | Ø0.136 THRU |
| A5 | 3.450 | 1.069 | Ø0.136 THRU |
| A6 | 3.150 | 1.069 | Ø0.136 THRU |
| A7 | 0.181 | 1.210 | Ø0.136 THRU |
| A8 | 0.181 | 0.415 | Ø0.136 THRU |
| B1 | 3.472 | 0.250 | Ø0.250 THRU |
| C1 | 2.669 | 0.714 | Ø0.375 THRU |
| D1 | 1.543 | 0.939 | Ø0.156 THRU |
| D2 | 0.700 | 0.625 | Ø0.156 THRU |
| E1 | 0.181 | 0.813 | Ø0.203 THRU |



ALL ATTEMPTS HAVE BEEN MADE TO PRESENT AN ACCURATE DRAWING BASED ON THE SOURCE MATERIAL. USE SOURCE MATERIAL TO PROOF THIS DRAWING PRIOR TO USE. READ THE TECHNICAL NOTES ON THIS DRAWING PRIOR TO USE.

IF ERRORS IN THIS DRAWING ARE DISCOVERED EMAIL JAYANDREW338@GMAIL.COM. MATERIAL

TITLE:
Receiver - Left Side

SIZE **B** FIREARM MODEL AR-15 REV **N/A**

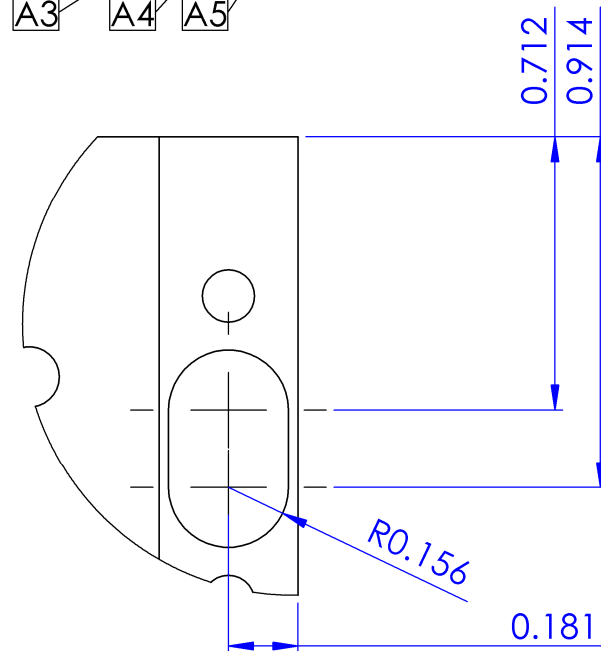
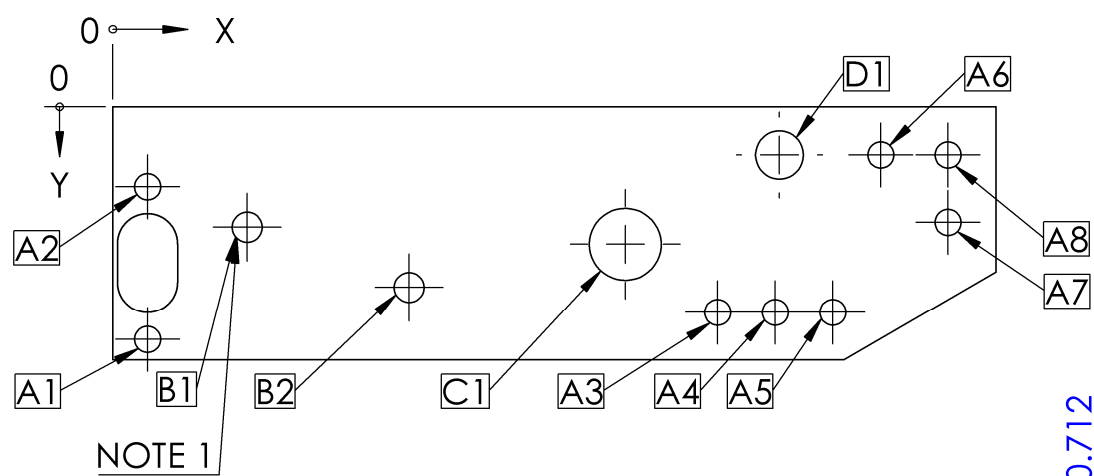
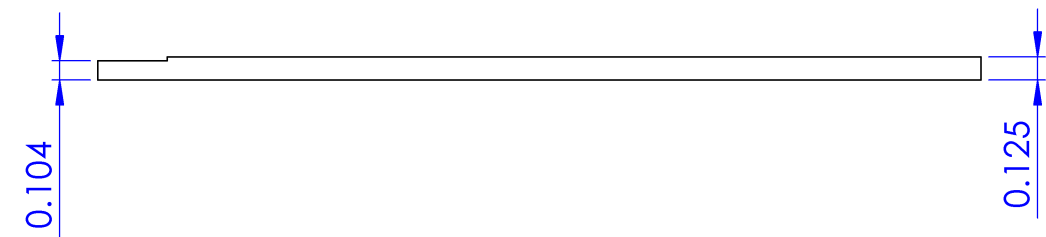
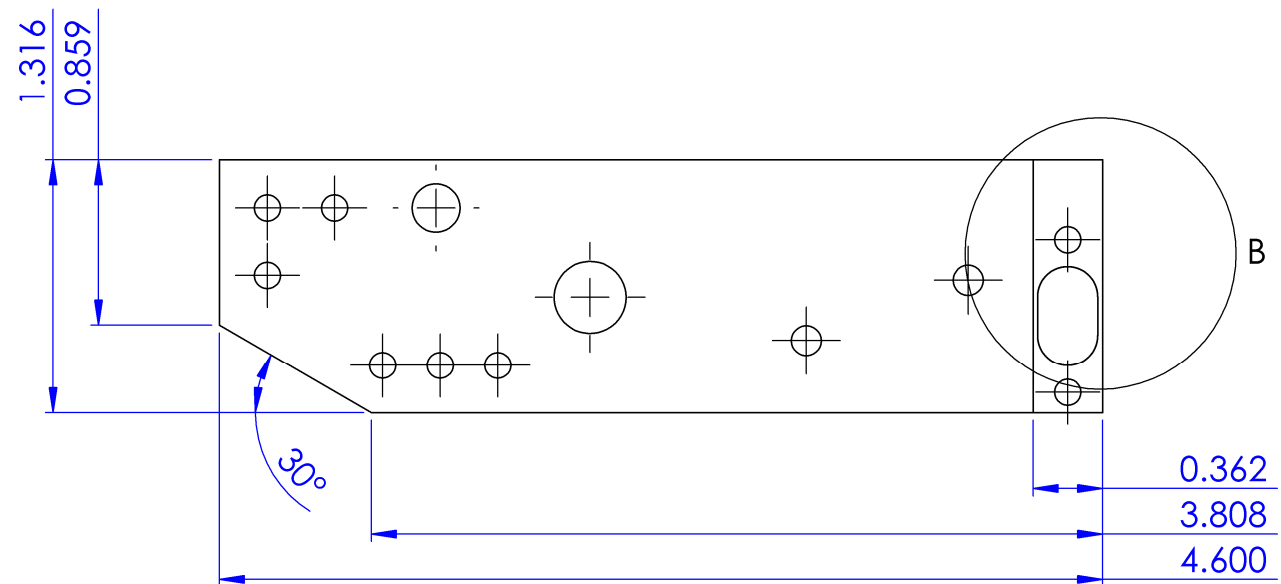
DO NOT SCALE DRAWING

IF YOU LIKE WHAT YOU SEE HELP SUPPORT US DONATE VIA PAYPAL

SCALE: 1:1

WEIGHT:

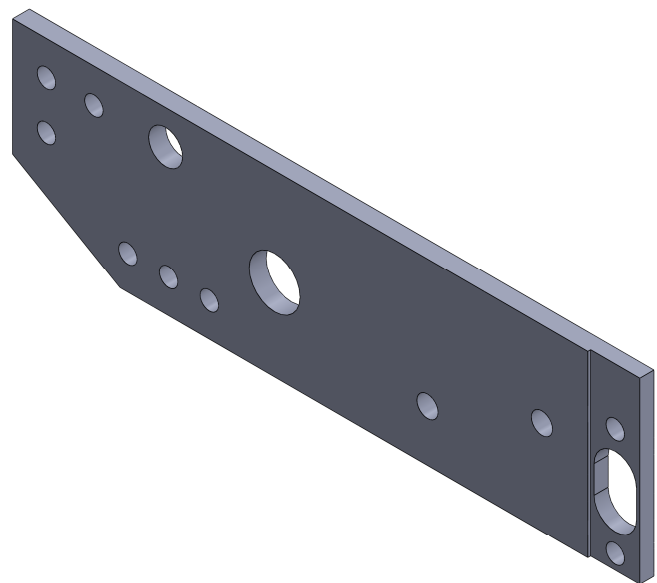
SHEET 3 OF 14



DETAIL B
SCALE 2 : 1

NOTE 1: HAND REAM HOLE B1, B2 TO FINAL DIAMETER

| TAG | X LOC | Y LOC | SIZE |
|-----|-------|-------|-------------|
| A1 | 0.181 | 1.210 | Ø0.136 THRU |
| A2 | 0.181 | 0.415 | Ø0.136 THRU |
| A3 | 3.150 | 1.069 | Ø0.136 THRU |
| A4 | 3.450 | 1.069 | Ø0.136 THRU |
| A5 | 3.750 | 1.069 | Ø0.136 THRU |
| A6 | 4.000 | 0.250 | Ø0.136 THRU |
| A7 | 4.350 | 0.600 | Ø0.136 THRU |
| A8 | 4.350 | 0.250 | Ø0.136 THRU |
| B1 | 0.700 | 0.625 | Ø0.156 THRU |
| B2 | 1.543 | 0.939 | Ø0.156 THRU |
| C1 | 2.669 | 0.714 | Ø0.375 THRU |
| D1 | 3.472 | 0.250 | Ø0.250 THRU |



ALL ATTEMPTS HAVE BEEN MADE TO PRESENT AN ACCURATE DRAWING BASED ON THE SOURCE MATERIAL. USE SOURCE MATERIAL TO PROOF THIS DRAWING PRIOR TO USE. READ THE TECHNICAL NOTES ON THIS DRAWING PRIOR TO USE.

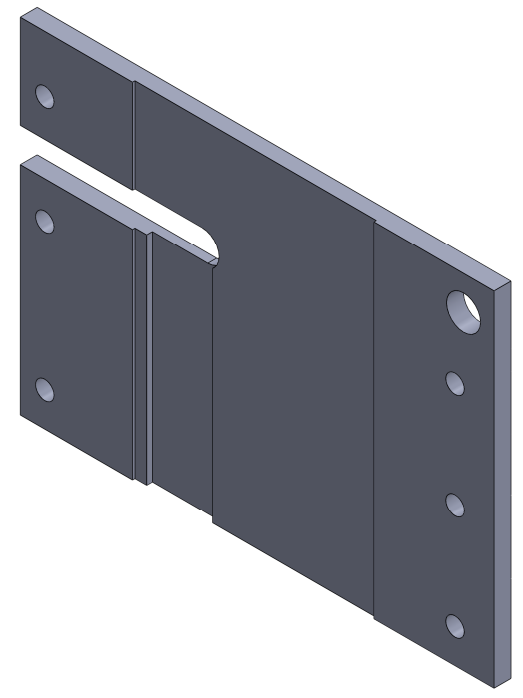
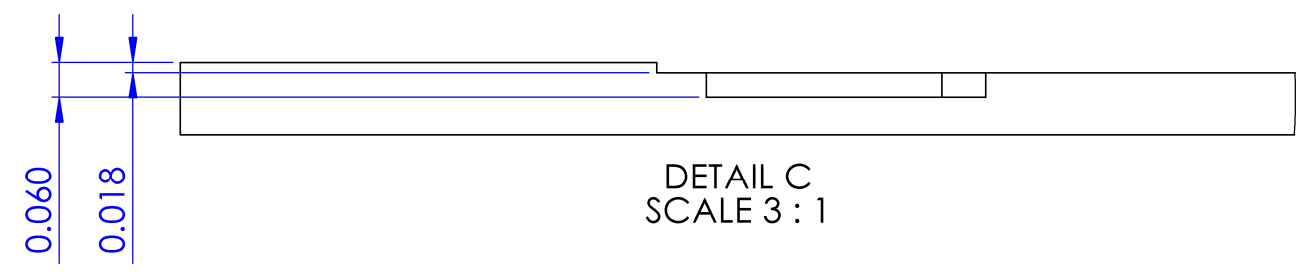
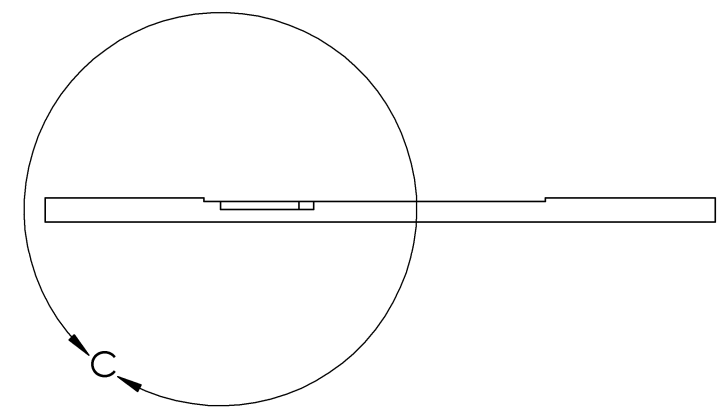
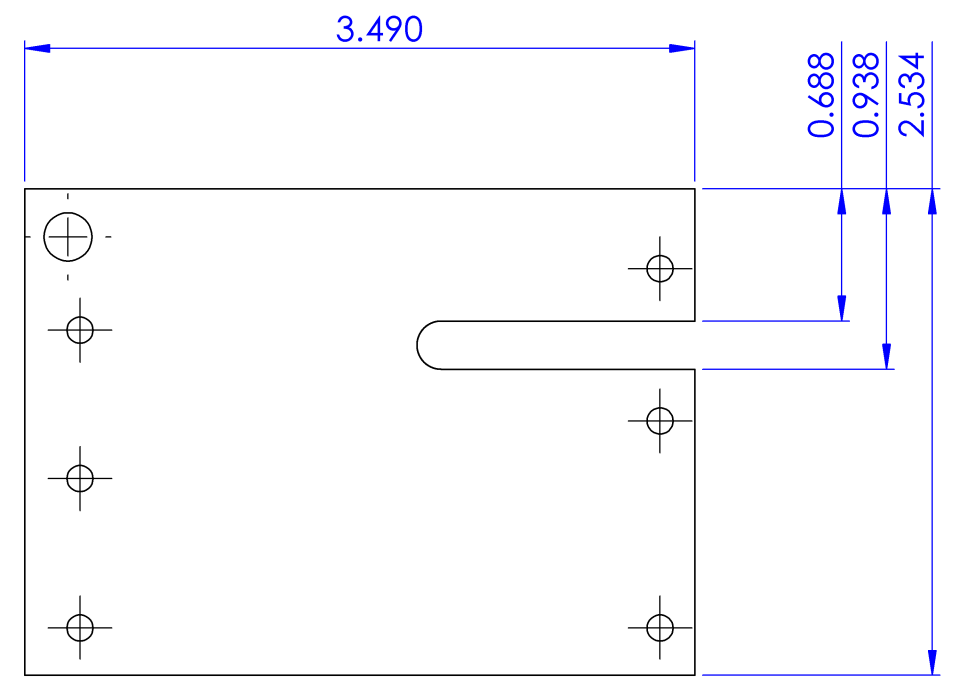
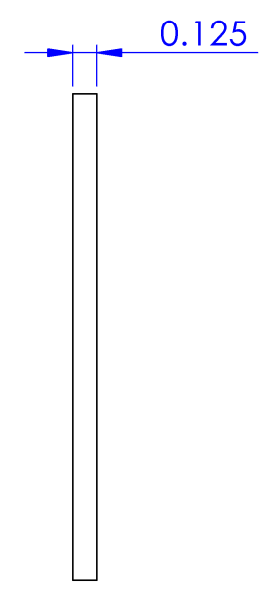
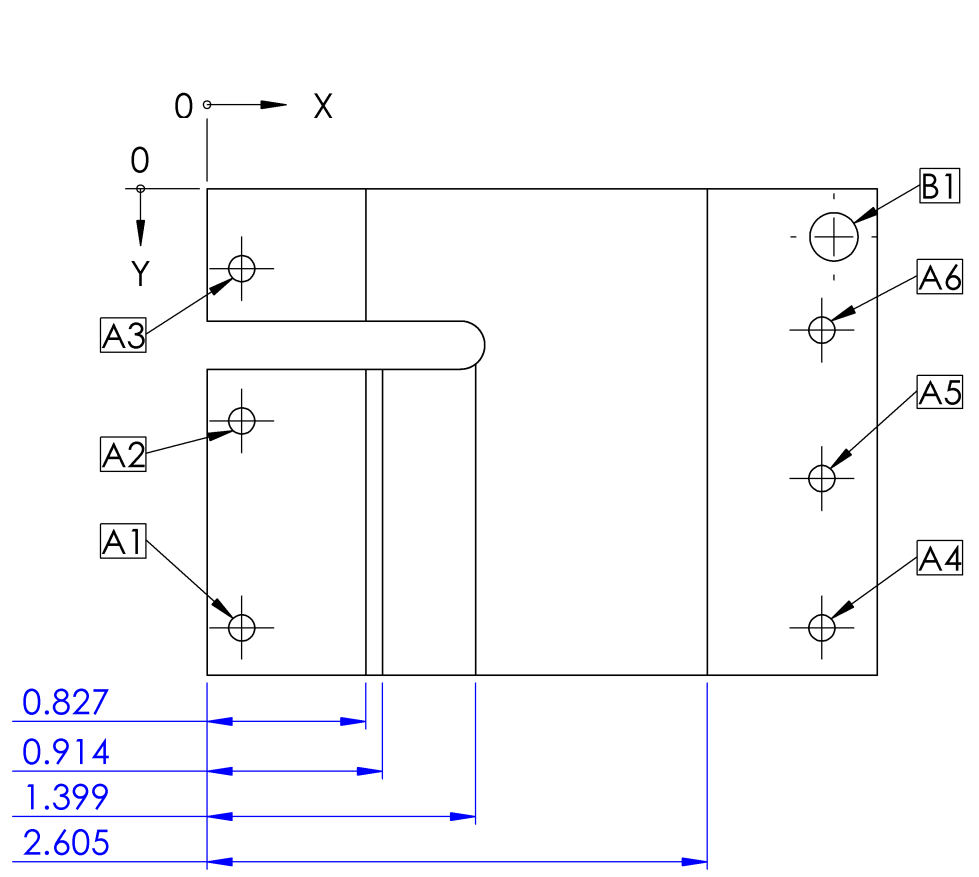
IF ERRORS IN THIS DRAWING ARE DISCOVERED EMAIL JAYANDREW338@GMAIL.COM.
MATERIAL

TITLE:
Receiver - Right Side

| | | |
|------------------|------------------------|------------|
| SIZE B | FIREARM MODEL AR-15 | REV N/A |
|------------------|------------------------|------------|

DO NOT SCALE DRAWING
IF YOU LIKE WHAT YOU SEE HELP SUPPORT US DONATE VIA PAYPAL

| | | |
|------------|---------|---------------|
| SCALE: 1:1 | WEIGHT: | SHEET 4 OF 14 |
|------------|---------|---------------|



| TAG | X LOC | Y LOC | SIZE |
|-----|-------|-------|-------------|
| A1 | 0.181 | 2.284 | Ø0.136 THRU |
| A2 | 0.181 | 1.210 | Ø0.136 THRU |
| A3 | 0.181 | 0.415 | Ø0.136 THRU |
| A4 | 3.203 | 2.284 | Ø0.136 THRU |
| A5 | 3.203 | 1.509 | Ø0.136 THRU |
| A6 | 3.203 | 0.734 | Ø0.136 THRU |
| B1 | 3.265 | 0.250 | Ø0.250 THRU |

ALL ATTEMPTS HAVE BEEN MADE TO PRESENT AN ACCURATE DRAWING BASED ON THE SOURCE MATERIAL. USE SOURCE MATERIAL TO PROOF THIS DRAWING PRIOR TO USE. READ THE TECHNICAL NOTES ON THIS DRAWING PRIOR TO USE.

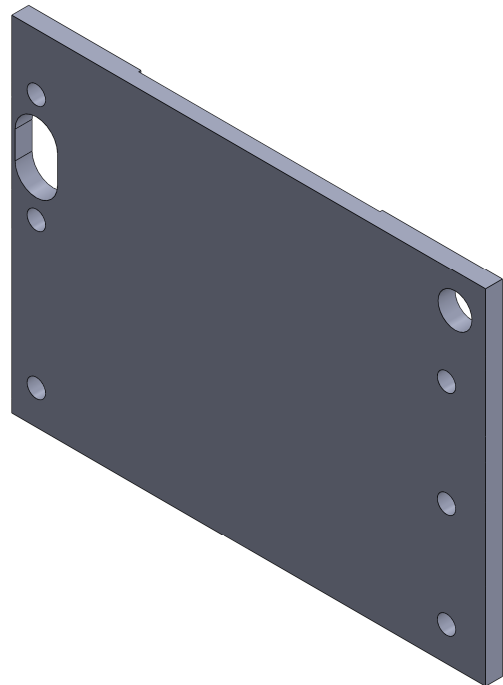
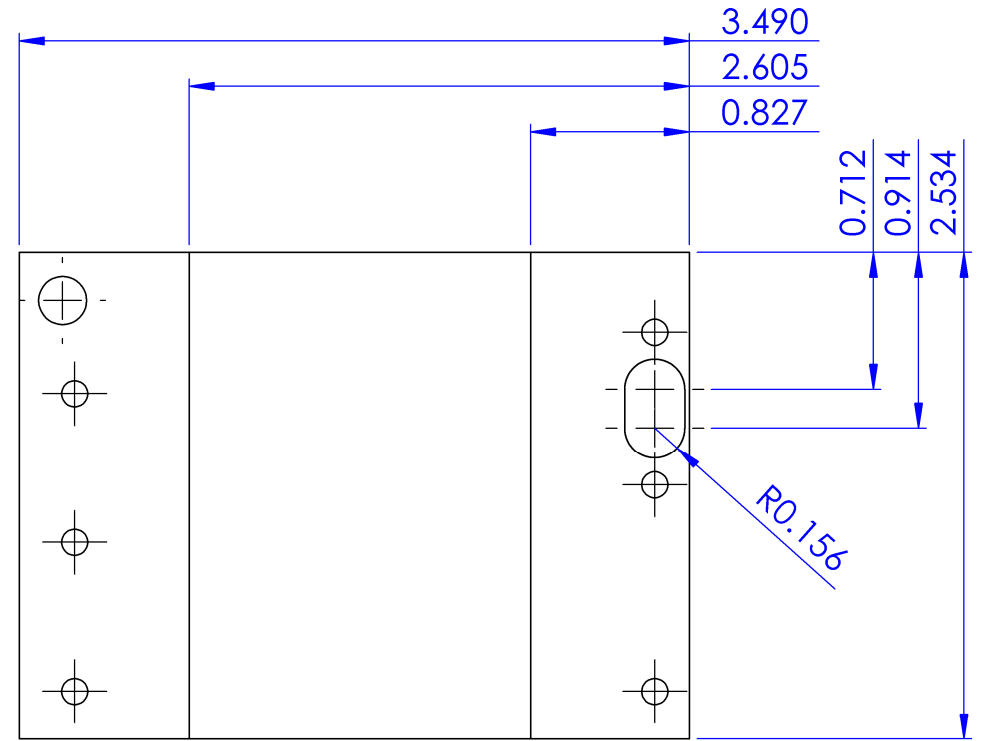
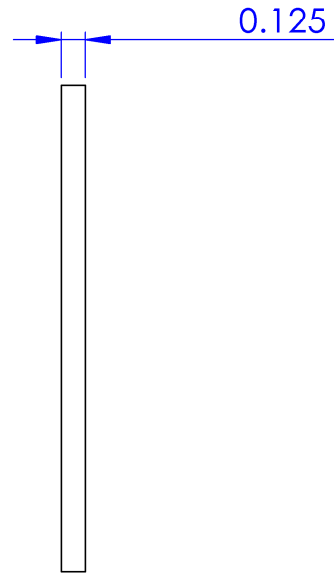
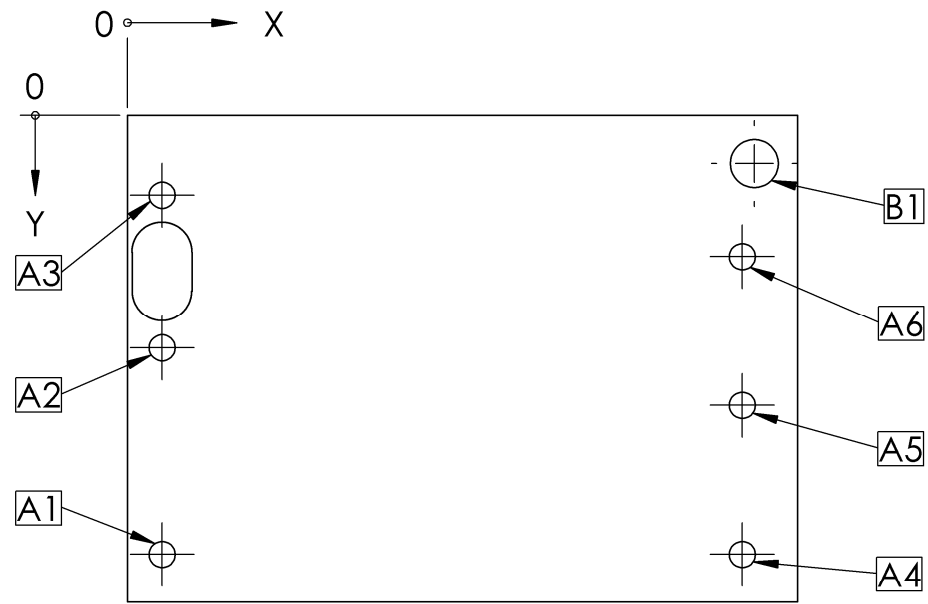
IF ERRORS IN THIS DRAWING ARE DISCOVERED EMAIL JAYANDREW338@GMAIL.COM. MATERIAL

DO NOT SCALE DRAWING

IF YOU LIKE WHAT YOU SEE HELP SUPPORT US DONATE VIA PAYPAL

TITLE: **Magazine Well - Left Side**

| | | |
|------------------|------------------------|---------------|
| SIZE B | FIREARM MODEL AR-15 | REV N/A |
| SCALE: 1:1 | WEIGHT: | SHEET 5 OF 14 |



| TAG | X LOC | Y LOC | SIZE |
|-----|-------|-------|-------------|
| A1 | 0.18 | 2.28 | Ø0.136 THRU |
| A2 | 0.18 | 1.21 | Ø0.136 THRU |
| A3 | 0.18 | 0.42 | Ø0.136 THRU |
| A4 | 3.20 | 2.28 | Ø0.136 THRU |
| A5 | 3.20 | 1.51 | Ø0.136 THRU |
| A6 | 3.20 | 0.73 | Ø0.136 THRU |
| B1 | 3.27 | 0.25 | Ø0.250 THRU |

ALL ATTEMPTS HAVE BEEN MADE TO PRESENT AN ACCURATE DRAWING BASED ON THE SOURCE MATERIAL. USE SOURCE MATERIAL TO PROOF THIS DRAWING PRIOR TO USE. READ THE TECHNICAL NOTES ON THIS DRAWING PRIOR TO USE.

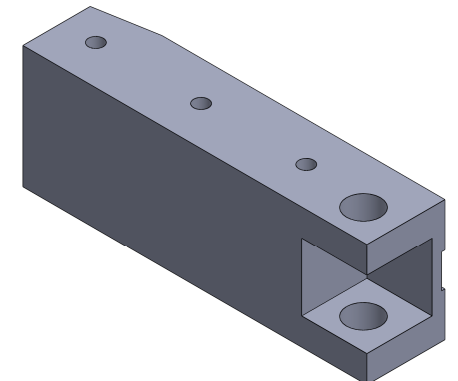
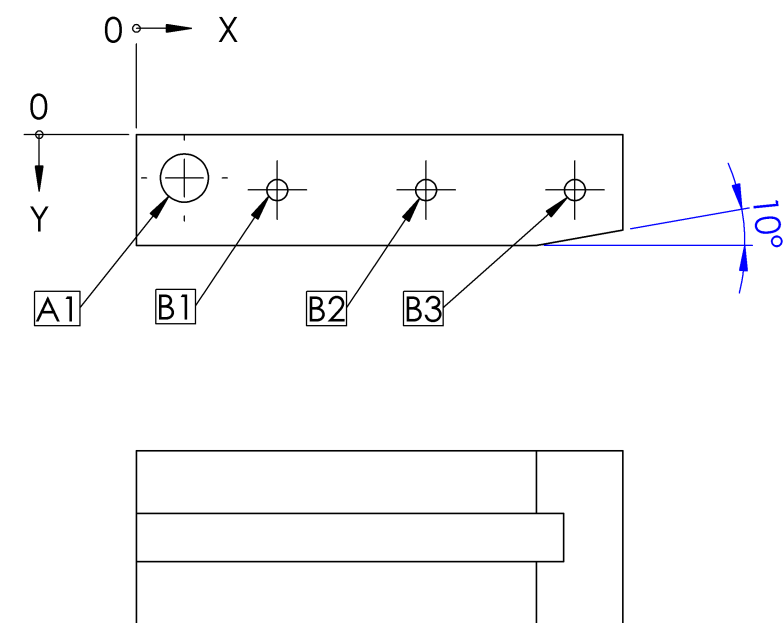
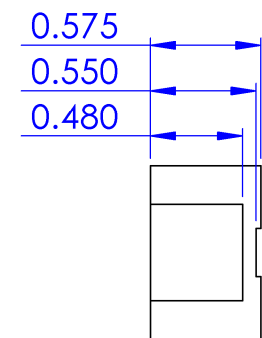
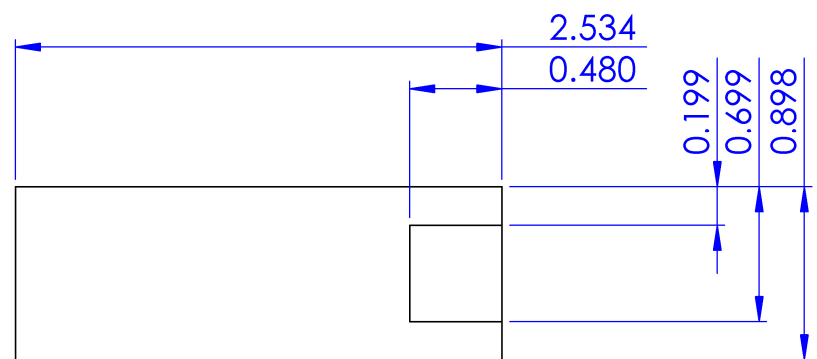
IF ERRORS IN THIS DRAWING ARE DISCOVERED EMAIL JAYANDREW338@GMAIL.COM. MATERIAL

TITLE:
Magazine Well - Right Side

| | | |
|------------------|------------------------|---------------|
| SIZE B | FIREARM MODEL AR-15 | REV N/A |
| SCALE: 1:1 | WEIGHT: | SHEET 6 OF 14 |

DO NOT SCALE DRAWING

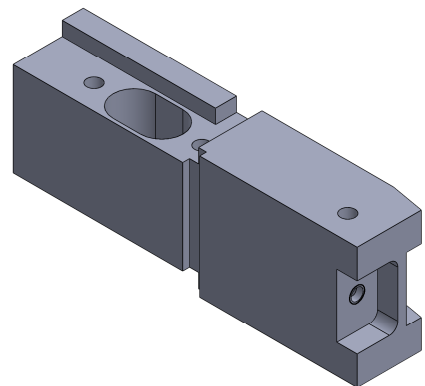
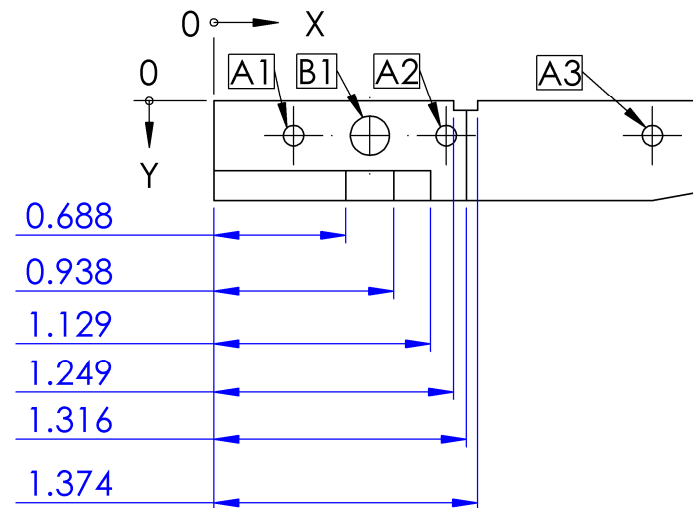
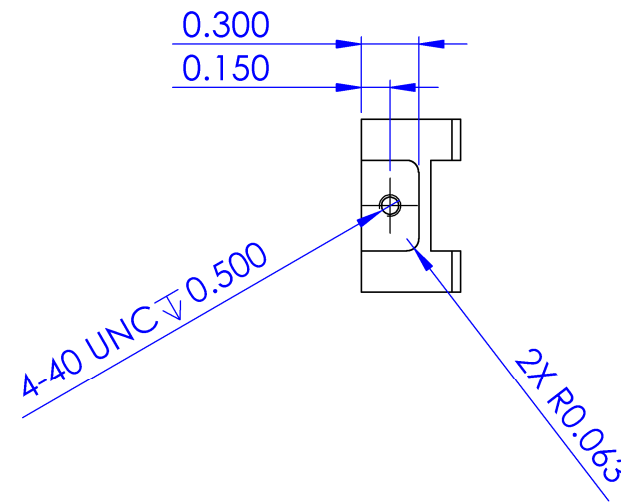
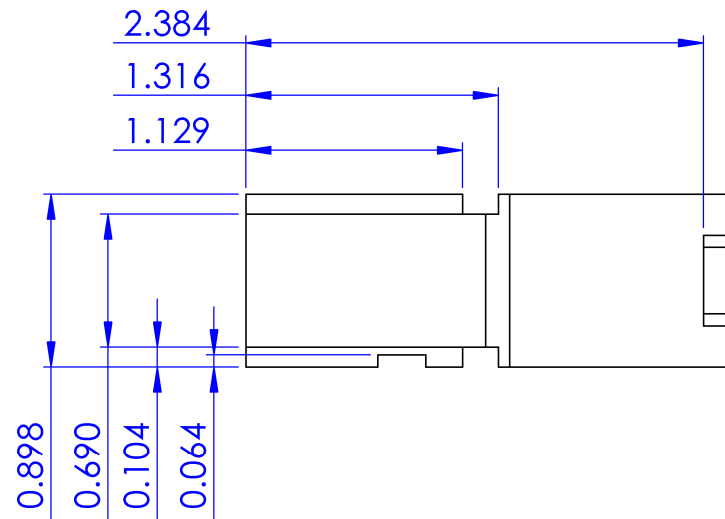
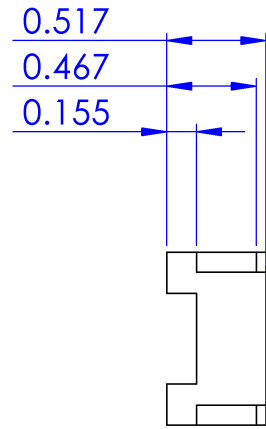
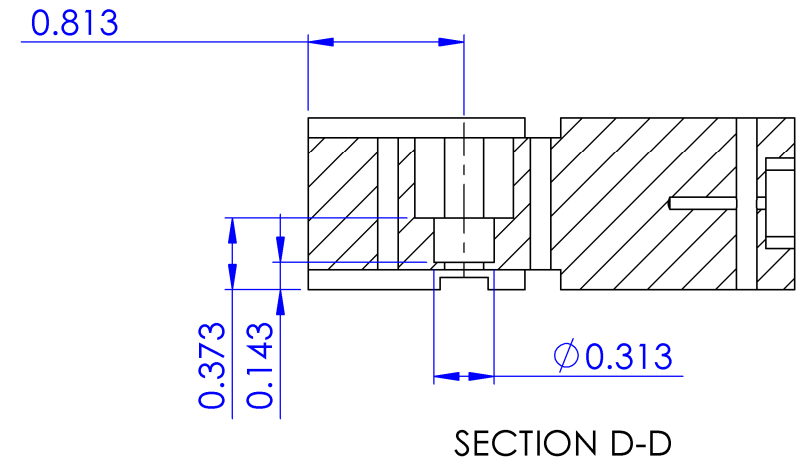
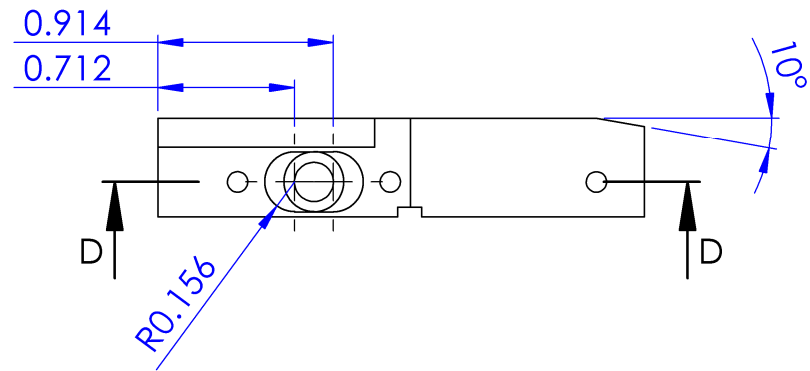
IF YOU LIKE WHAT YOU SEE HELP SUPPORT US DONATE VIA PAYPAL



| TAG | X LOC | Y LOC | SIZE |
|-----|-------|-------|--------------|
| A1 | 0.250 | 0.225 | Ø 0.250 THRU |
| B1 | 0.734 | 0.288 | Ø 0.109 THRU |
| B2 | 1.509 | 0.288 | Ø 0.109 THRU |
| B3 | 2.284 | 0.288 | Ø 0.109 THRU |

Note: Holes B1, B2, B3 may be tapped thru with 6-32

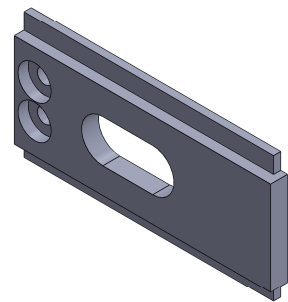
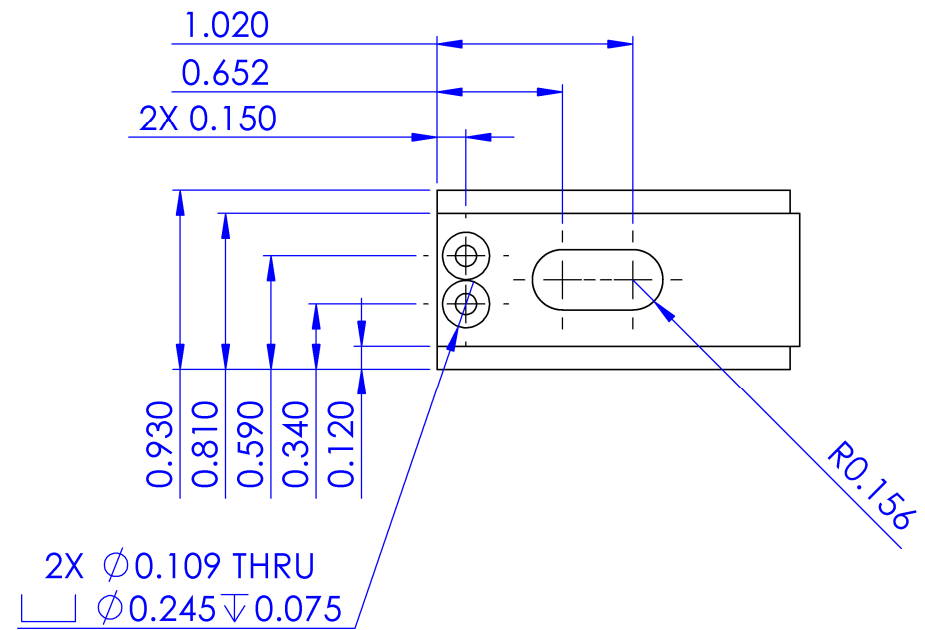
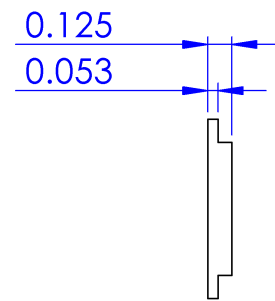
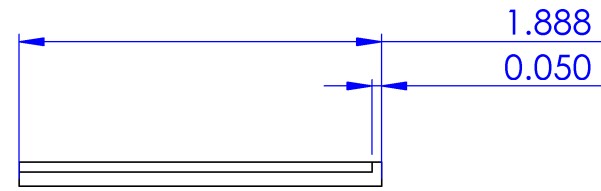
| | | | |
|--|-------------------------------|---|----------------------|
| <small>ALL ATTEMPTS HAVE BEEN MADE TO PRESENT AN ACCURATE DRAWING BASED ON THE SOURCE MATERIAL. USE SOURCE MATERIAL TO PROOF THIS DRAWING PRIOR TO USE. READ THE TECHNICAL NOTES ON THIS DRAWING PRIOR TO USE.</small> <small>IF ERRORS IN THIS DRAWING ARE DISCOVERED EMAIL JAYANDREW338@GMAIL.COM. MATERIAL</small> | | TITLE: <h2>Magazine Well - Front</h2> | |
| SIZE B | FIREARM MODEL AR-15 | REV N/A | |
| <small>DO NOT SCALE DRAWING</small> <small>IF YOU LIKE WHAT YOU SEE HELP SUPPORT US DONATE VIA PAYPAL</small> | SCALE: 1:1 | WEIGHT: | SHEET 7 OF 14 |



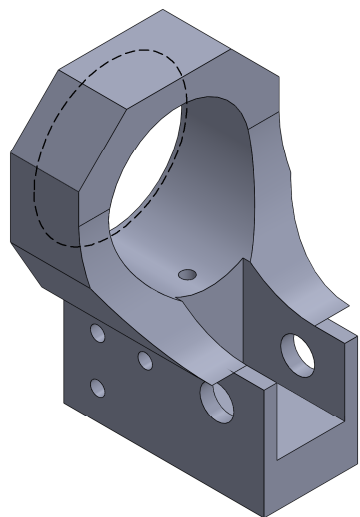
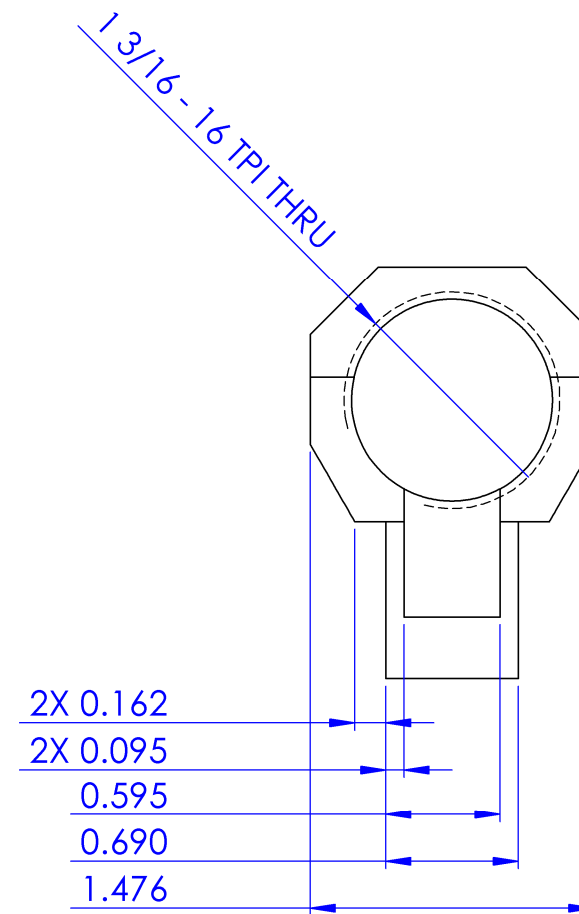
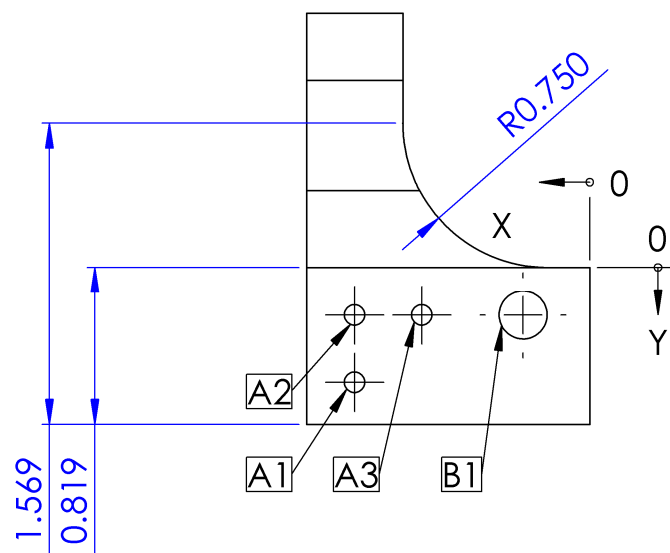
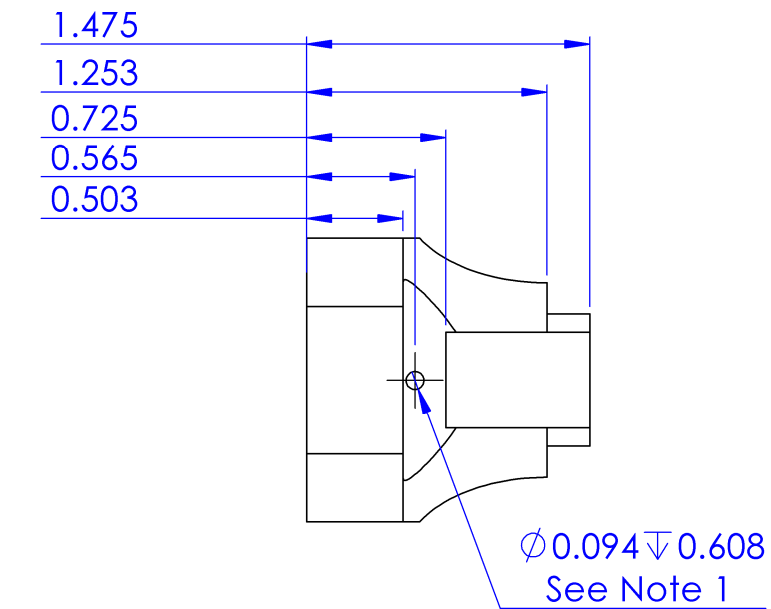
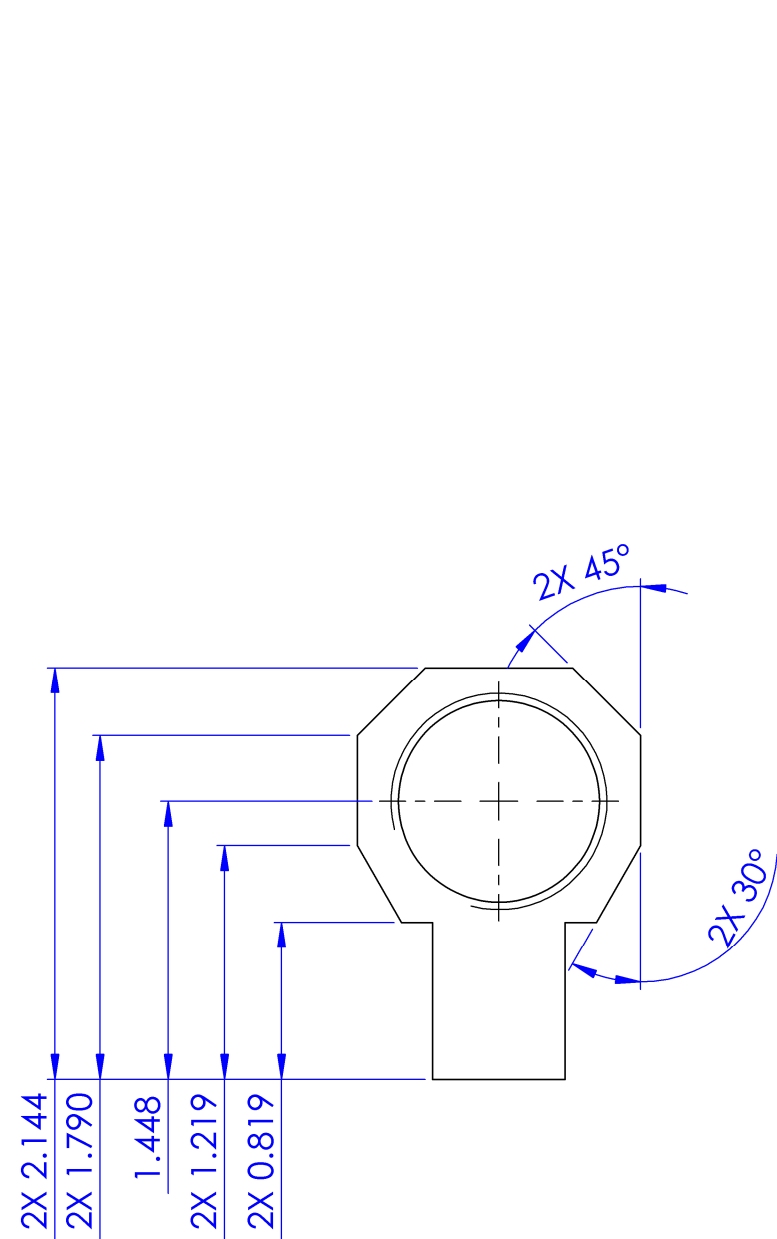
Note: Holes A1, A2, A3 may be tapped thru 6-32

| TAG | X LOC | Y LOC | SIZE |
|-----|-------|-------|-------------|
| A1 | 0.415 | 0.181 | Ø0.107 THRU |
| A2 | 1.210 | 0.181 | Ø0.107 THRU |
| A3 | 2.284 | 0.181 | Ø0.107 THRU |
| B1 | 0.813 | 0.181 | Ø0.203 |

| | | | |
|--|-------------------------------|--|---------------|
| <small>ALL ATTEMPTS HAVE BEEN MADE TO PRESENT AN ACCURATE DRAWING BASED ON THE SOURCE MATERIAL. USE SOURCE MATERIAL TO PROOF THIS DRAWING PRIOR TO USE. READ THE TECHNICAL NOTES ON THIS DRAWING PRIOR TO USE.</small> <small>IF ERRORS IN THIS DRAWING ARE DISCOVERED EMAIL JAYANDREW338@GMAIL.COM. MATERIAL</small> | | TITLE: Magazine Well - Rear | |
| SIZE B | FIREARM MODEL AR-15 | REV N/A | |
| <small>DO NOT SCALE DRAWING</small> <small>IF YOU LIKE WHAT YOU SEE HELP SUPPORT US DONATE VIA PAYPAL</small> | SCALE: 1:1 | WEIGHT: | SHEET 8 OF 14 |



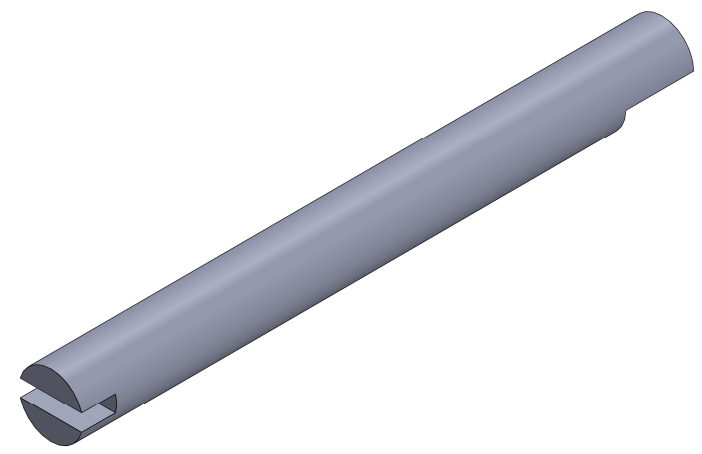
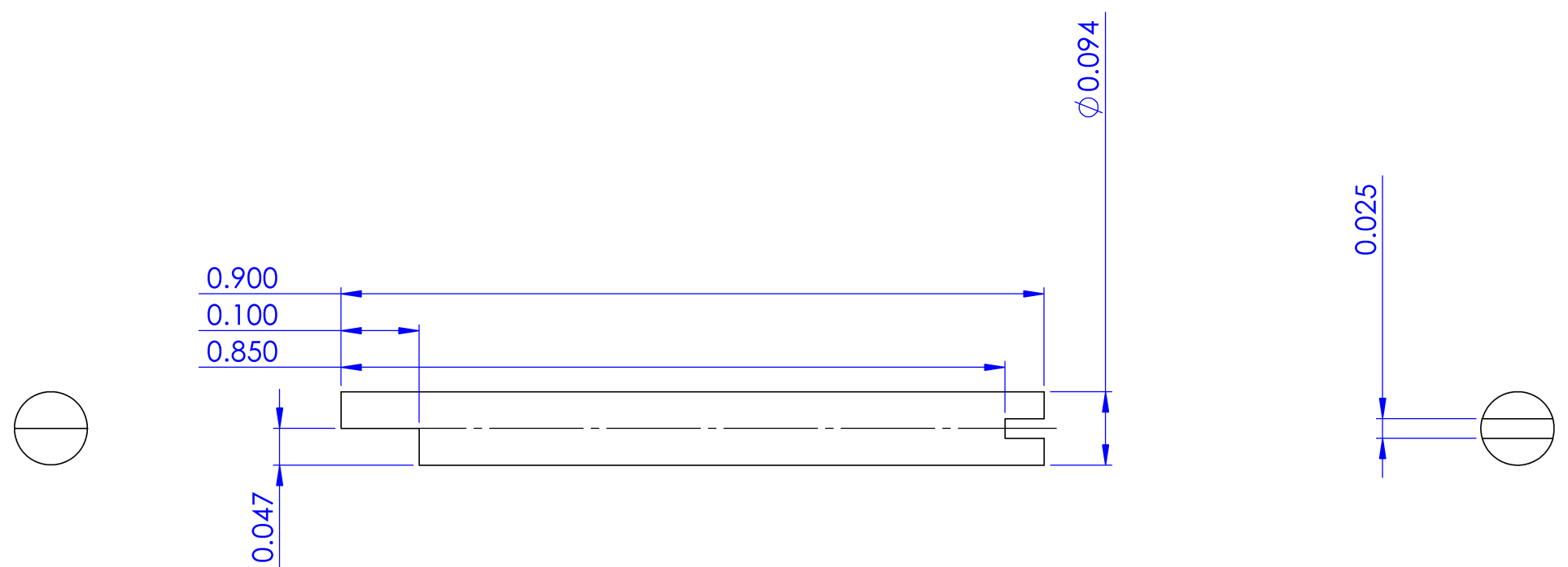
| | | | |
|--|---|--------------------------------|---------------------------|
| <p>ALL ATTEMPTS HAVE BEEN MADE TO PRESENT AN ACCURATE DRAWING BASED ON THE SOURCE MATERIAL. USE SOURCE MATERIAL TO PROOF THIS DRAWING PRIOR TO USE. READ THE TECHNICAL NOTES ON THIS DRAWING PRIOR TO USE.</p> <p>IF ERRORS IN THIS DRAWING ARE DISCOVERED EMAIL JAYANDREW338@GMAIL.COM.</p> <p>MATERIAL</p> | <p>TITLE: Fire Control Well - Bottom</p> | | |
| | <p>SIZE B</p> | <p>FIREARM MODEL AR-15</p> | <p>REV N/A</p> |
| <p>DO NOT SCALE DRAWING</p> <p>IF YOU LIKE WHAT YOU SEE HELP SUPPORT US DONATE VIA PAYPAL</p> | <p>SCALE: 1:1</p> | <p>WEIGHT:</p> | <p>SHEET 9 OF 14</p> |



Note 1: Drill this hole prior to threading the main hole
 Note 2: Holes A1, A2, A3 may be tapped thru 6-32

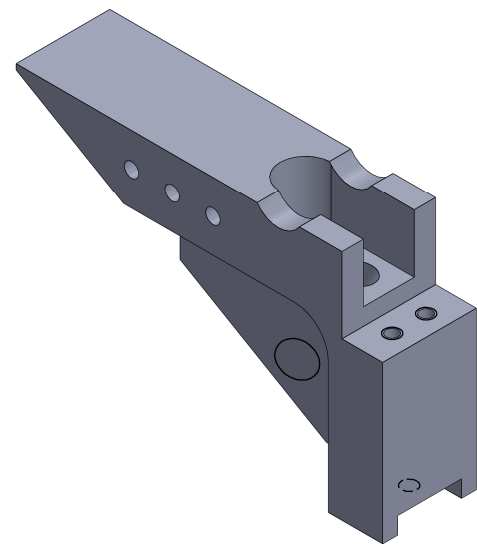
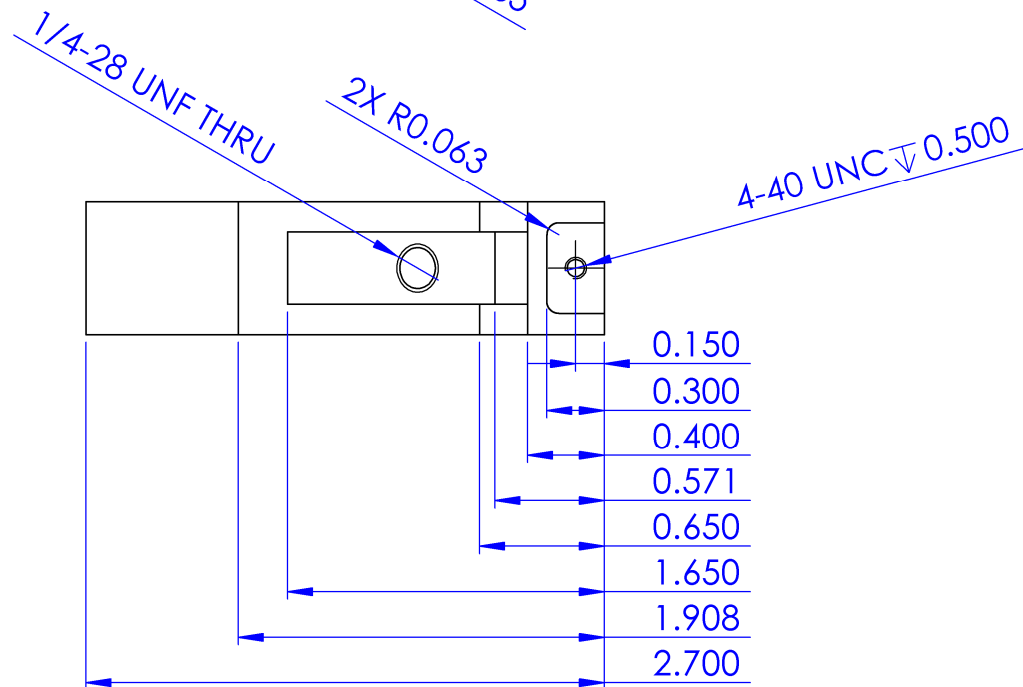
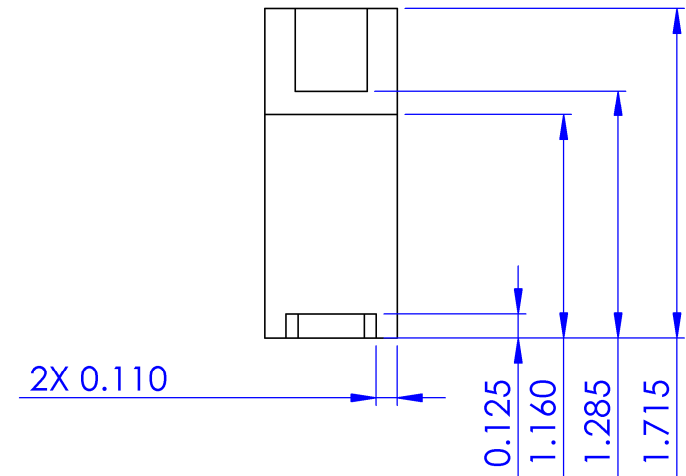
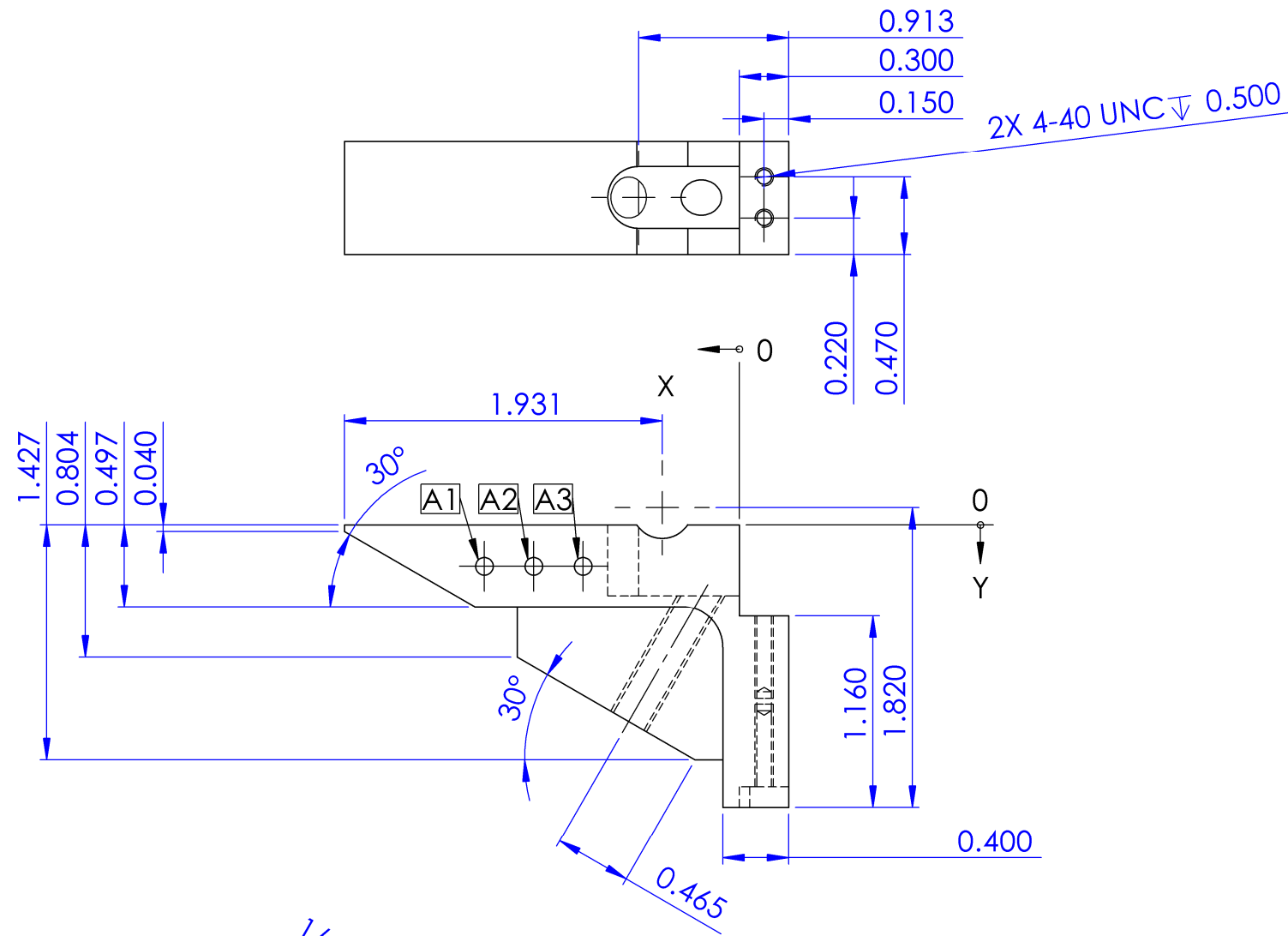
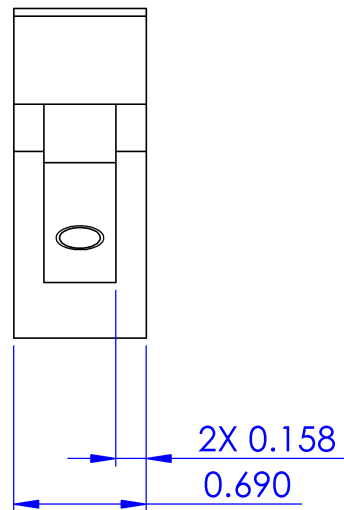
| TAG | X LOC | Y LOC | SIZE |
|-----|-------|-------|-------------------|
| A1 | 1.23 | 0.60 | $\phi 0.107$ THRU |
| A2 | 1.23 | 0.25 | $\phi 0.107$ THRU |
| A3 | 0.88 | 0.25 | $\phi 0.107$ THRU |
| B1 | 0.35 | 0.25 | $\phi 0.250$ THRU |

| | | | |
|---|--|----------------------------------|------------------------|
| ALL ATTEMPTS HAVE BEEN MADE TO PRESENT AN ACCURATE DRAWING BASED ON THE SOURCE MATERIAL. USE SOURCE MATERIAL TO PROOF THIS DRAWING PRIOR TO USE. READ THE TECHNICAL NOTES ON THIS DRAWING PRIOR TO USE. | | TITLE: Receiver Buffer | |
| IF ERRORS IN THIS DRAWING ARE DISCOVERED EMAIL JAYANDREW338@GMAIL.COM. MATERIAL | | SIZE B | FIREARM MODEL AR-15 |
| DO NOT SCALE DRAWING | | SCALE: 1:1 | REV N/A |
| IF YOU LIKE WHAT YOU SEE HELP SUPPORT US DONATE VIA PAYPAL | | WEIGHT: | SHEET 10 OF 14 |



Note: Scale is 5:1

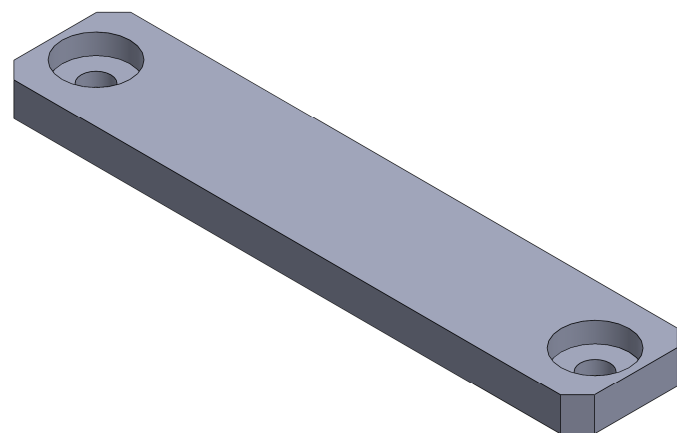
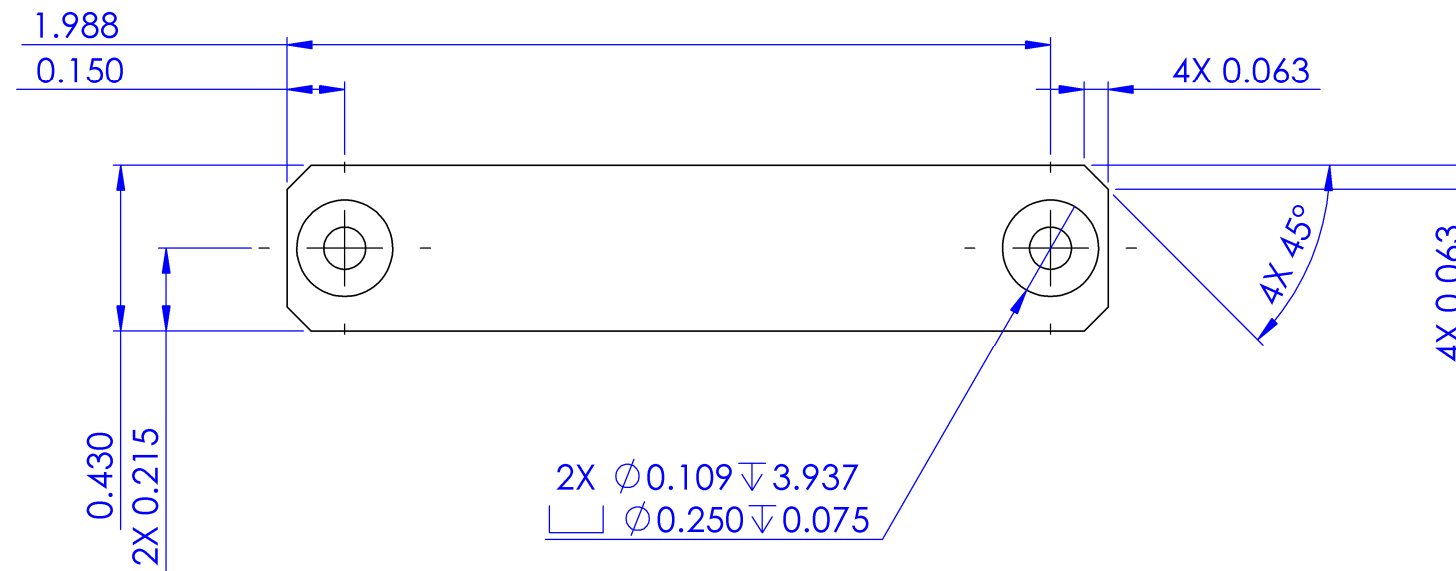
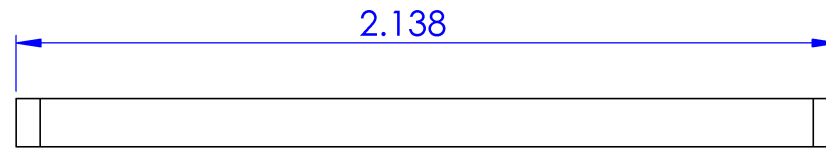
| | | | |
|--|------------------------------|------------|----------------|
| <p>ALL ATTEMPTS HAVE BEEN MADE TO PRESENT AN ACCURATE DRAWING BASED ON THE SOURCE MATERIAL. USE SOURCE MATERIAL TO PROOF THIS DRAWING PRIOR TO USE. READ THE TECHNICAL NOTES ON THIS DRAWING PRIOR TO USE.</p> <p>IF ERRORS IN THIS DRAWING ARE DISCOVERED EMAIL JAYANDREW338@GMAIL.COM.</p> <p>MATERIAL</p> | TITLE: | | |
| | <h1>Buffer Retainer Pin</h1> | | |
| SIZE | FIREARM MODEL | REV | |
| B | AR-15 | N/A | |
| DO NOT SCALE DRAWING | SCALE: 5:1 | WEIGHT: | SHEET 11 OF 14 |
| IF YOU LIKE WHAT YOU SEE HELP SUPPORT US DONATE VIA PAYPAL | | | |



Note: Holes A1, A2, A3 may be tapped thru with 6-32

| TAG | X LOC | Y LOC | SIZE |
|-----|-------|-------|-------------|
| A1 | 1.550 | 0.250 | Ø0.107 THRU |
| A2 | 1.250 | 0.250 | Ø0.107 THRU |
| A3 | 0.950 | 0.250 | Ø0.107 THRU |

| | | | |
|---|--|--------------------------------|------------------------|
| ALL ATTEMPTS HAVE BEEN MADE TO PRESENT AN ACCURATE DRAWING BASED ON THE SOURCE MATERIAL. USE SOURCE MATERIAL TO PROOF THIS DRAWING PRIOR TO USE. READ THE TECHNICAL NOTES ON THIS DRAWING PRIOR TO USE. | | TITLE: Receiver Grip | |
| IF ERRORS IN THIS DRAWING ARE DISCOVERED EMAIL JAYANDREW338@GMAIL.COM. MATERIAL | | SIZE B | FIREARM MODEL AR-15 |
| DO NOT SCALE DRAWING | | SCALE: 1:1 | REV N/A |
| IF YOU LIKE WHAT YOU SEE HELP SUPPORT US DONATE VIA PAYPAL | | WEIGHT: | SHEET 12 OF 14 |



| | | | |
|--|---------------------------------------|---|-------------------------------|
| <small>ALL ATTEMPTS HAVE BEEN MADE TO PRESENT AN ACCURATE DRAWING BASED ON THE SOURCE MATERIAL. USE SOURCE MATERIAL TO PROOF THIS DRAWING PRIOR TO USE. READ THE TECHNICAL NOTES ON THIS DRAWING PRIOR TO USE.</small> <small>IF ERRORS IN THIS DRAWING ARE DISCOVERED EMAIL JAYANDREW338@GMAIL.COM. MATERIAL</small> | | <small>TITLE:</small> Trigger Gaurd | |
| <small>SIZE</small> B | <small>FIREARM MODEL</small> AR-15 | <small>REV</small> N/A | |
| <small>DO NOT SCALE DRAWING</small> <small>IF YOU LIKE WHAT YOU SEE HELP SUPPORT US DONATE VIA PAYPAL</small> | <small>SCALE: 1:1</small> | <small>WEIGHT:</small> | <small>SHEET 13 OF 14</small> |

ALL ATTEMPTS HAVE BEEN MADE TO PRESENT AN ACCURATE DRAWING BASED ON THE SOURCE MATERIAL. USE SOURCE MATERIAL TO PROOF THIS DRAWING PRIOR TO USE. READ THE TECHNICAL NOTES ON THIS DRAWING PRIOR TO USE.

IF ERRORS IN THIS DRAWING ARE DISCOVERED EMAIL JAYANDREW338@GMAIL.COM.
MATERIAL

TITLE:

| | | |
|--|---------------|----------------|
| SIZE | FIREARM MODEL | REV |
| B | | |
| DO NOT SCALE DRAWING | WEIGHT: | SHEET 14 OF 14 |
| IF YOU LIKE WHAT YOU SEE HELP SUPPORT US DONATE VIA PAYPAL | SCALE: 1:1 | |